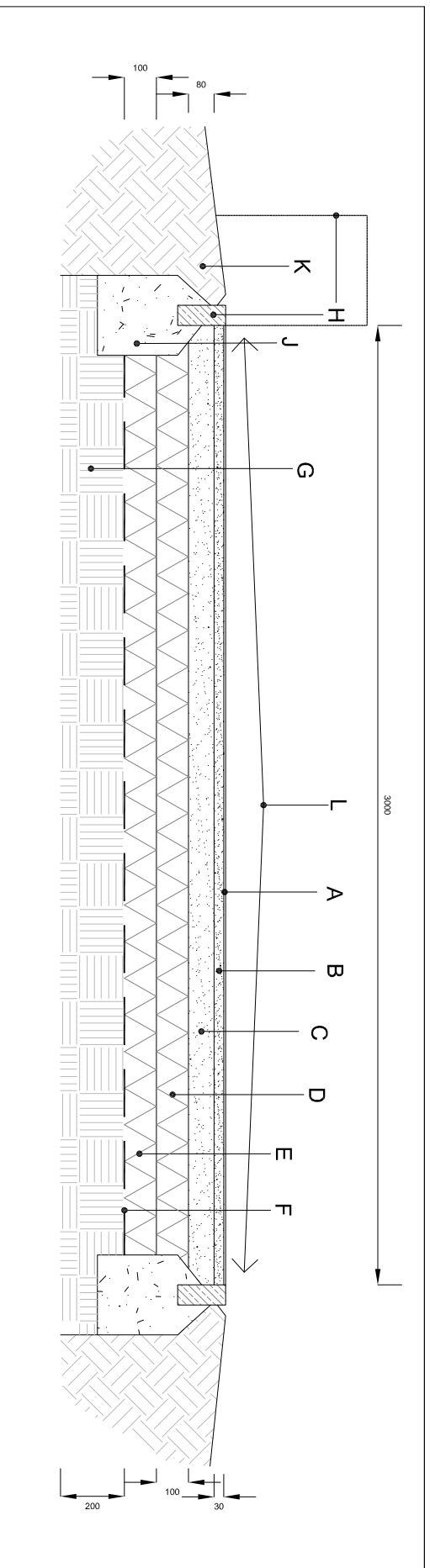
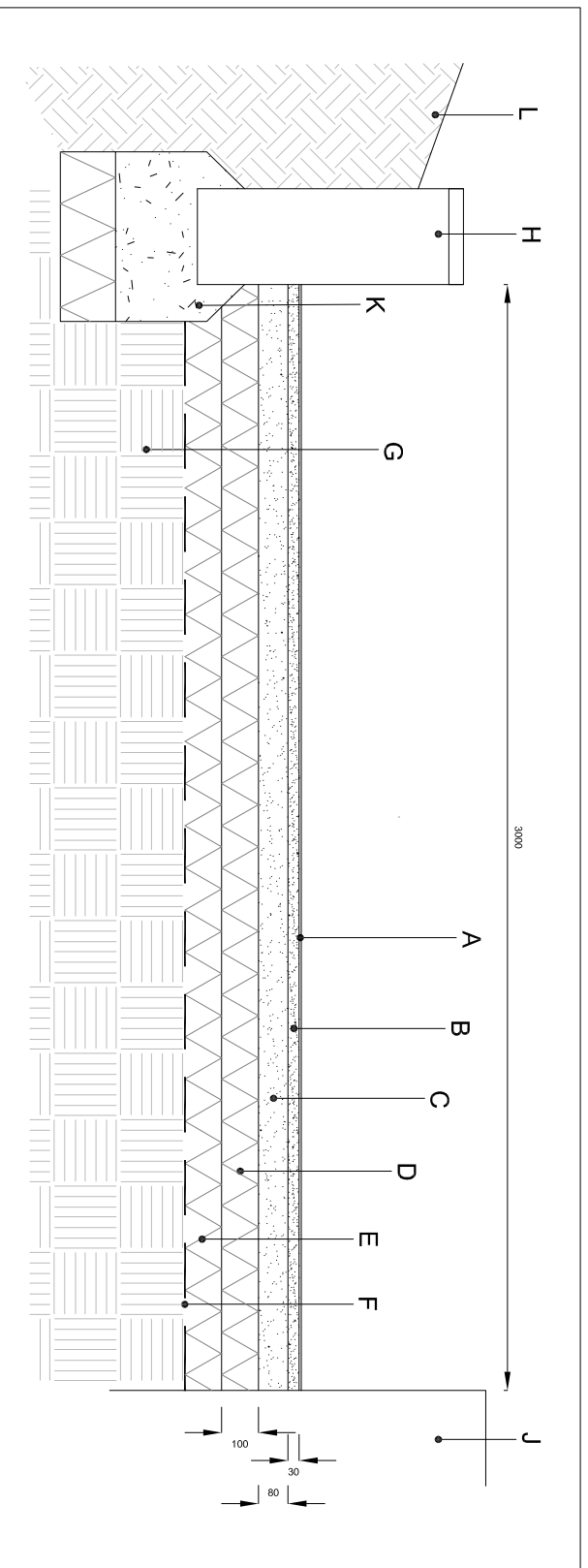


Section - 3.0m Width Shared-use Pedestrian and Cyclist Resin Bonded Surface with Pin Kerb Edge
Scale 1:20



- A - 'Addastone' coloured aggregate (6mm) resin bonded to base course
- B - Macadam surface course
- C - Macadam binder course
- D - Well compacted hardcore (MOT type 1)
- E - Clean well compacted hardcore (50mm-75mm) recycled crushed brick or concrete with no fines & no sulphates
- F - Geo-textile silt proof membrane
- G - Well consolidated subgrade
- H - Pre-cast concrete pin kerb or proposed sandstone wall
- J - Concrete foundation
- K - Topsoil
- L - Camber 1:40

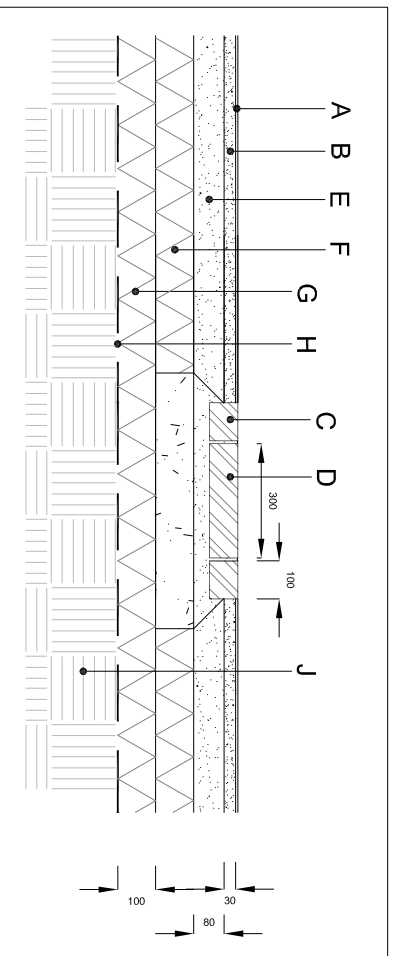
Section - 3.0m Width Shared-use Pedestrian and Cyclist Resin Bonded Surface with Wall Edge
Scale 1:20



- A - 'Addastone' coloured aggregate (6mm) resin bonded to base course
- B - Macadam surface course
- C - Macadam binder course
- D - Well compacted hardcore (MOT type 1)
- E - Clean well compacted hardcore (50mm-75mm) recycled crushed brick or concrete with no fines & no sulphates
- F - Geo-textile silt proof membrane
- G - Well consolidated subgrade
- H - Retaining Wall - to Engineer's specification
- I - Existing wall at variable heights
- J - Wall Concrete Foundation - to Engineer's specification
- L - Earth

Note: The landform has an existing gradient which will drain the path.

Section - 3.0m Width Shared-use Pedestrian and Cyclist Resin Bonded Surface with Etched Sandstone Unit
Scale 1:20



- A - 'Addastone' coloured aggregate (6mm) resin bonded to base course
- B - Macadam surface course
- C - Marshall's Yorkstone Greenmoor Rustic Tumbled sets 100x100x75mm
- D - Sandstone etched block 300x600x75mm
- E - Macadam binder course
- F - Well compacted hardcore (MOT type 1)
- G - Clean well compacted hardcore (50mm-75mm) recycled crushed brick or concrete with no fines & no sulphates
- H - Geo-textile silt proof membrane
- J - Well consolidated subgrade

DESCRIPTION

REV	DATE	DWN	CHK	APP
		RS	LF	LF

REVISIONS

REV	DATE	DWN	CHK	APP

NOTES:
- This drawing is for planning purposes only.
- All dimensions in millimetres.

SCALE: As Shown
PROJECT TITLE:
Haig Colliery Regeneration
Detail Sheets

DRAWING TITLE:
Paving: Addastone Surfacing

CLIENT:
Copeland Borough Council

REF: _____

Entec

GABLES HOUSE, KENILWORTH ROAD,
LEAMINGTON SPA, WARWICKSHIRE CV32 6UX,
TEL: (01927) 95959 / FAX: (01927) 55310

JOB No. 19973

DRAWING No. 19973/LEAD/014